



Yersinia pestis ID Flowchart

Major Characteristics:

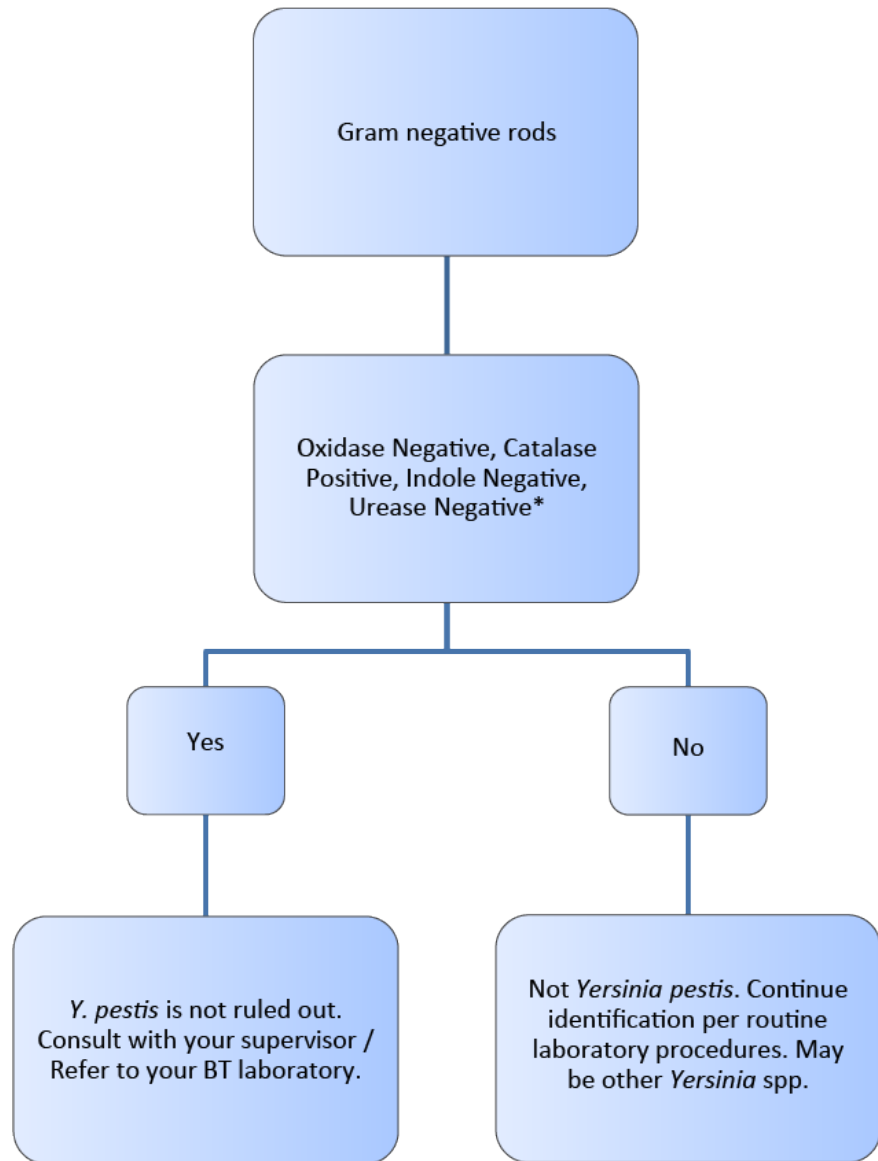
Gram stain morphology: Gram-negative rods, 0.5 x 1-2 mm

Colony morphology: Slow growing, pinpoint colonies after 24h; Colonies are 1-2mm, gray=white to slightly yellow and opaque on BAP after 48 h; non-lactose fermenter on MAC/EMB; growing both At 25-28 °C and at 35-37 °C.

Specimen: Blood, sputum, or lymph node aspirate.

WARNING:

Some of the automated identification systems do not identify *Y. Pestis* adequately. *Y. pestis* has been falsely identified as *Y. Pseudotuberculosis*, *Shigella*, *H₂S* negative *Salmonella*, *Acinetobacter* and *Pseudomonas* species.



*= See Biochemical Tests for Gram Negative Organism ID Job aid for positive and negative result reference.