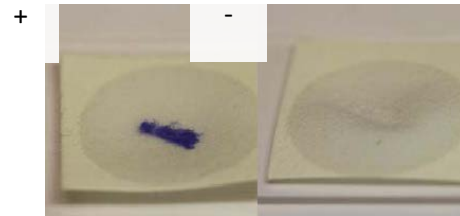


## Biochemical Tests for Gram Negative Organism ID

### Catalase Test



### Oxidase Test



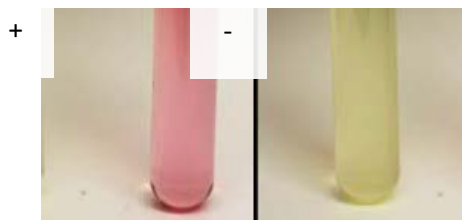
### Spot Indole



### Urea Test



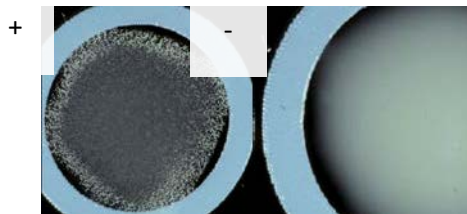
### Tube Indole



### PYR Test

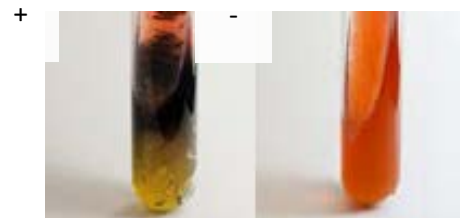


### Latex Agglutination



### Hydrogen Sulfide Production:

#### Tube Media



### MUG Test



#### Plate Media

#### Lead Acetate Strip

