

Bacillus anthracis

Gram stain:

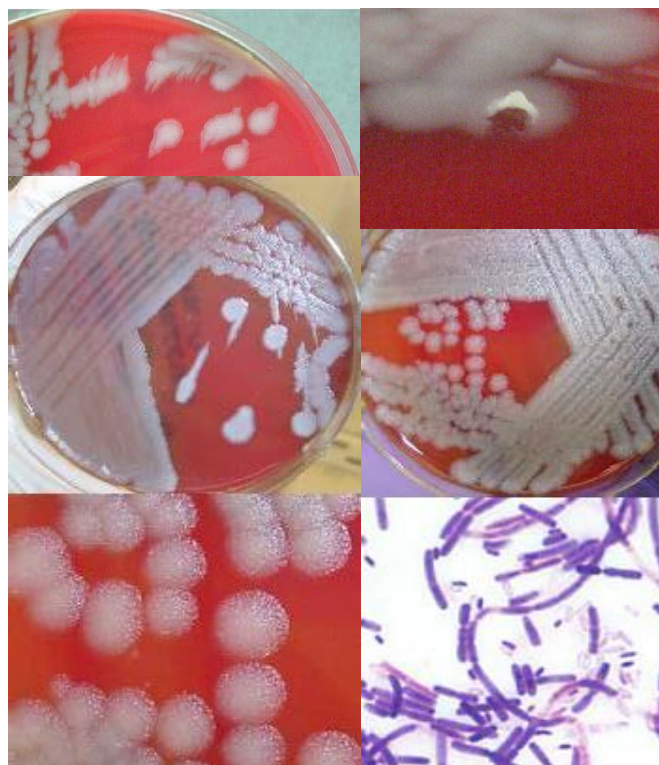
- Large Gram-positive rod (1-1.5 x 3-5µm)
- Central to subterminal spores
- Single, short chains, or long chains



- Colony morphology:
- Grey, ground-glass appearance
- Irregular borders on Sheep Blood agar; “Medusa head”, “comet tail”, or “comma-shaped projections”
- Tenacious consistency; stands up when teased with a loop
- Flat or slightly convex
- Non-hemolytic

Growth:

- Rapid on Sheep Blood agar (growth 6-8h, individual colonies 12-15h)
 - No growth on MacConkey agar
- Motility:
- Motility – Negative



Refer Cultures to your LRN Reference Lab