



CDC OneLab Virtual Summit 2022

Elevating Connections, Building Bridges in Adversity

Tuesday, April 19 to Thursday, April 21 EDT

Welcome!



Stay on mute until the interactive sessions



Email onelab@cdc.gov for technical issues or questions



Keep the closed captioning and Zoom windows open



Stay tuned for link for the general session at the end

About the Speaker



Reynolds Salerno, PhD
Centers for Disease Control and Prevention

To see full speaker biographies, visit <https://www.cdc.gov/labtraining/onelab/onelab-summit-2022.html>



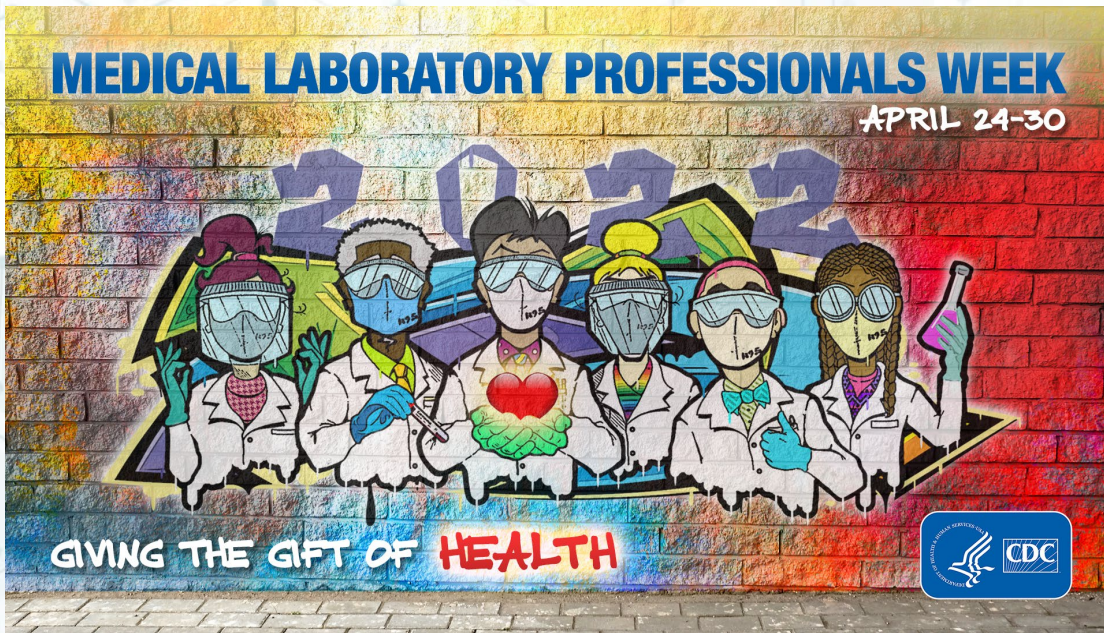
Strengthening Connections within the Changing Laboratory Community

Reynolds M Salerno, PhD
Director
CDC Division of Laboratory Systems

Wednesday, April 20, 2022



Medical Laboratory Professionals Week: April 24–30



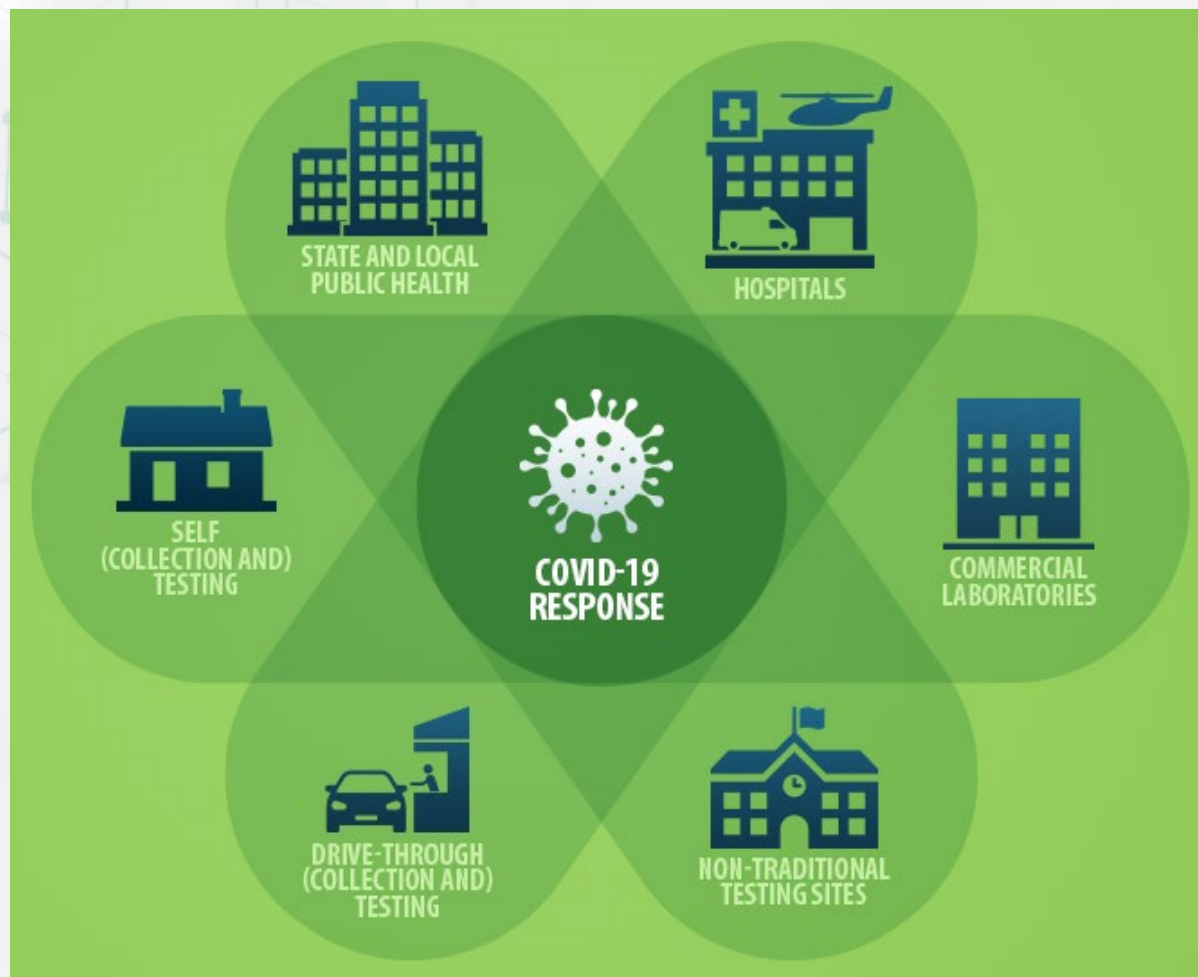
Join DLS in celebrating Lab Week 2022 by

- Showing appreciation to laboratory professionals
- Participating in DLS's Lab Week activities
- Accessing our digital toolkit and content

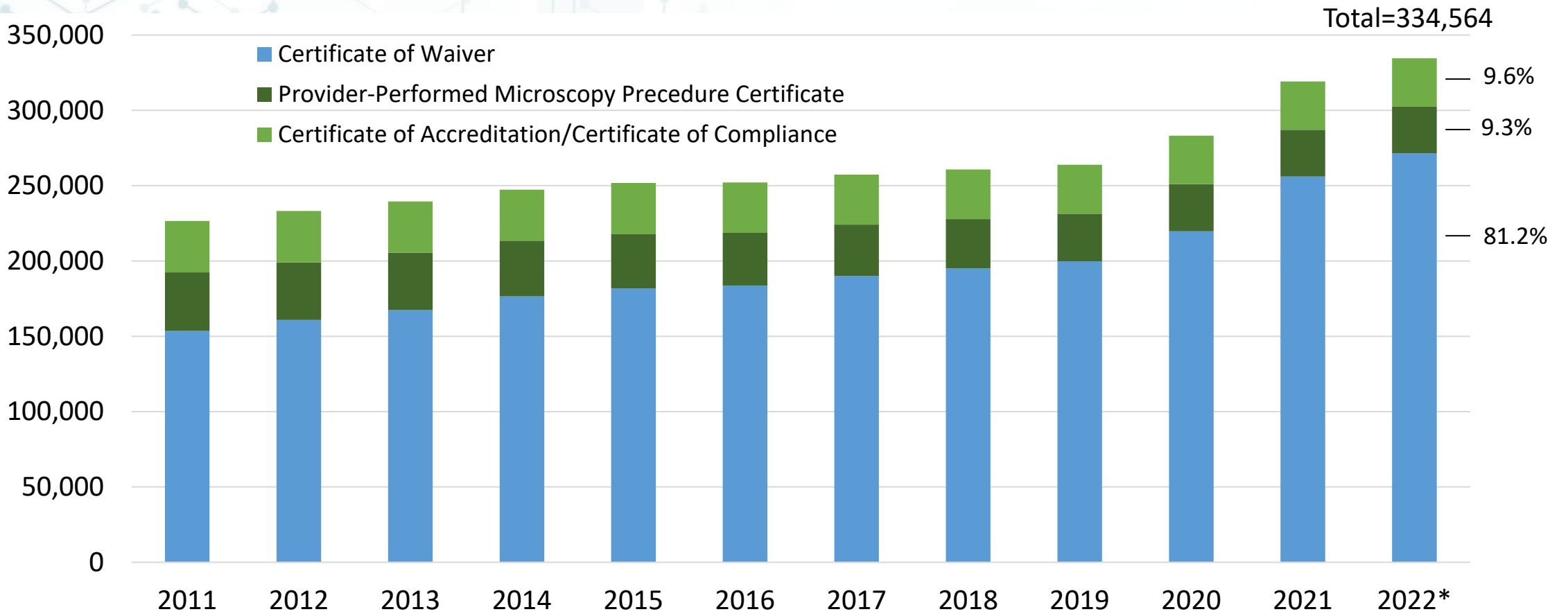
www.cdc.gov/csels/dls/lab-week/



Testing for COVID-19



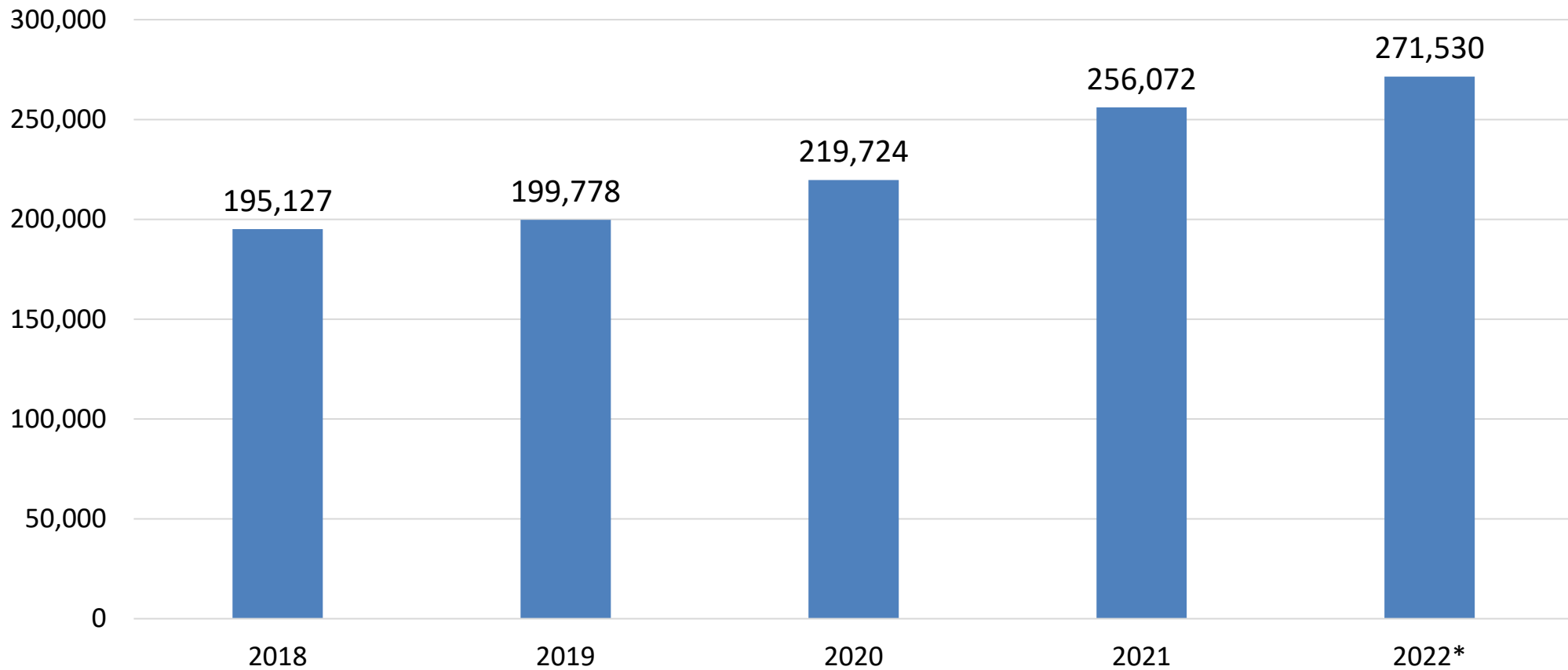
Trends in CLIA Certificate Types: 2011-2022



*2022 data as of April 15, 2022

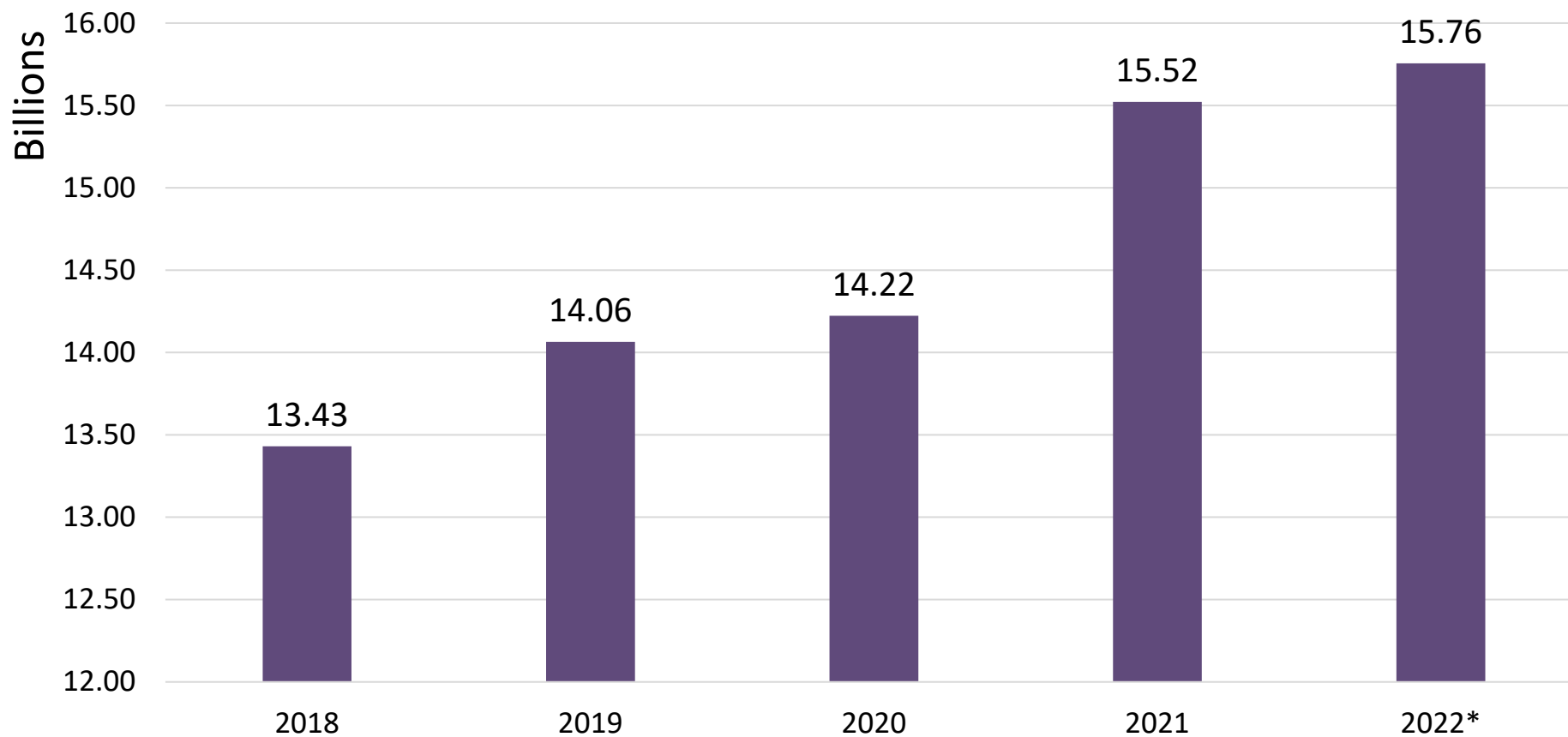
Data obtained from CMS QIES database. Lab types in QIES data are self-reported. Numbers include laboratories in CLIA-exempt states of NY and WA. Data does not include CLIA Certificate of Registration laboratories or US Department of Defense Laboratories.

Number of Certificate of Waiver Laboratories: 2018-2022*



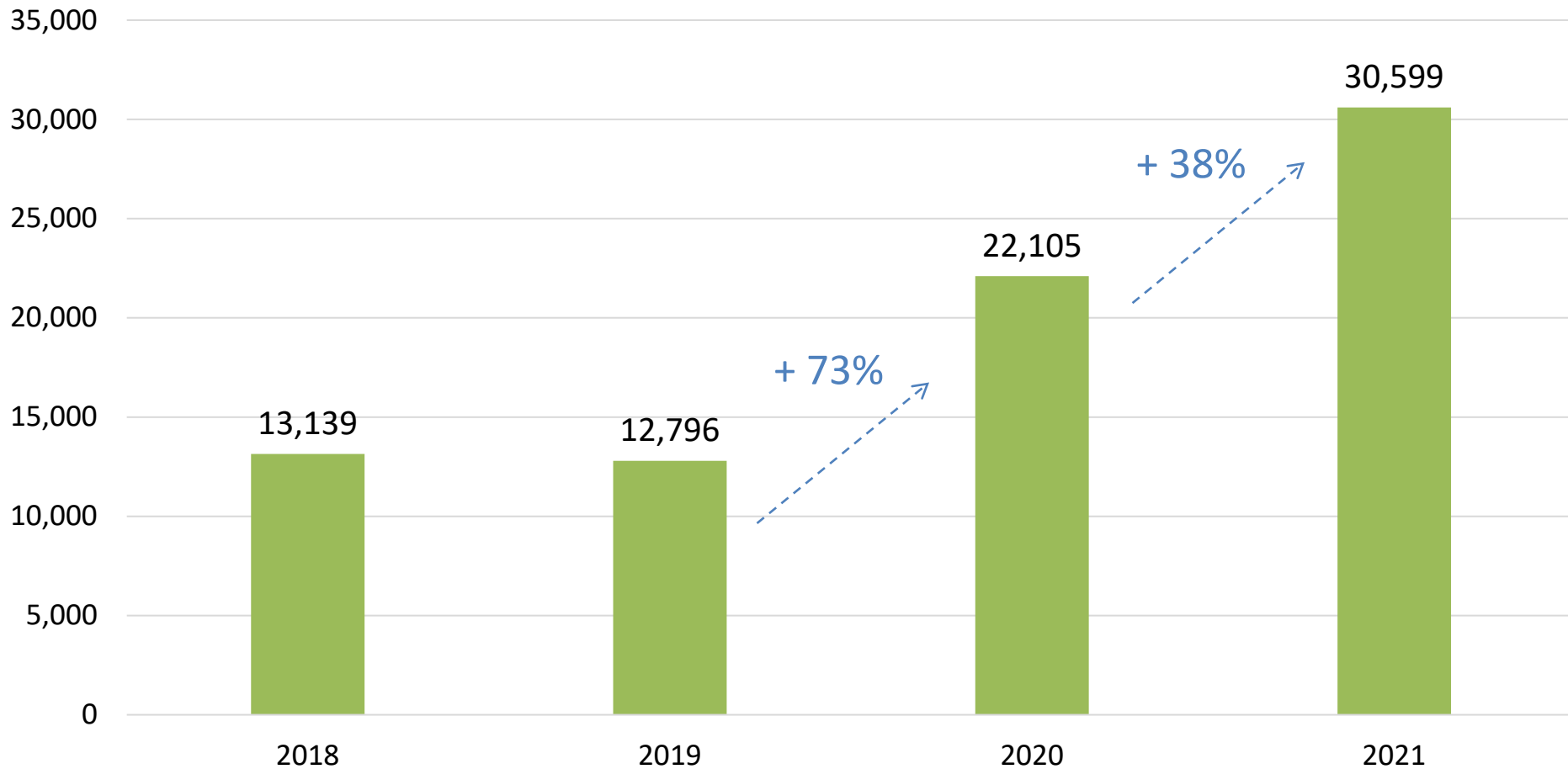
*2022 data reflects preceding 12 months as of April 15, 2022

CLIA Testing Volume: 2018-2022*

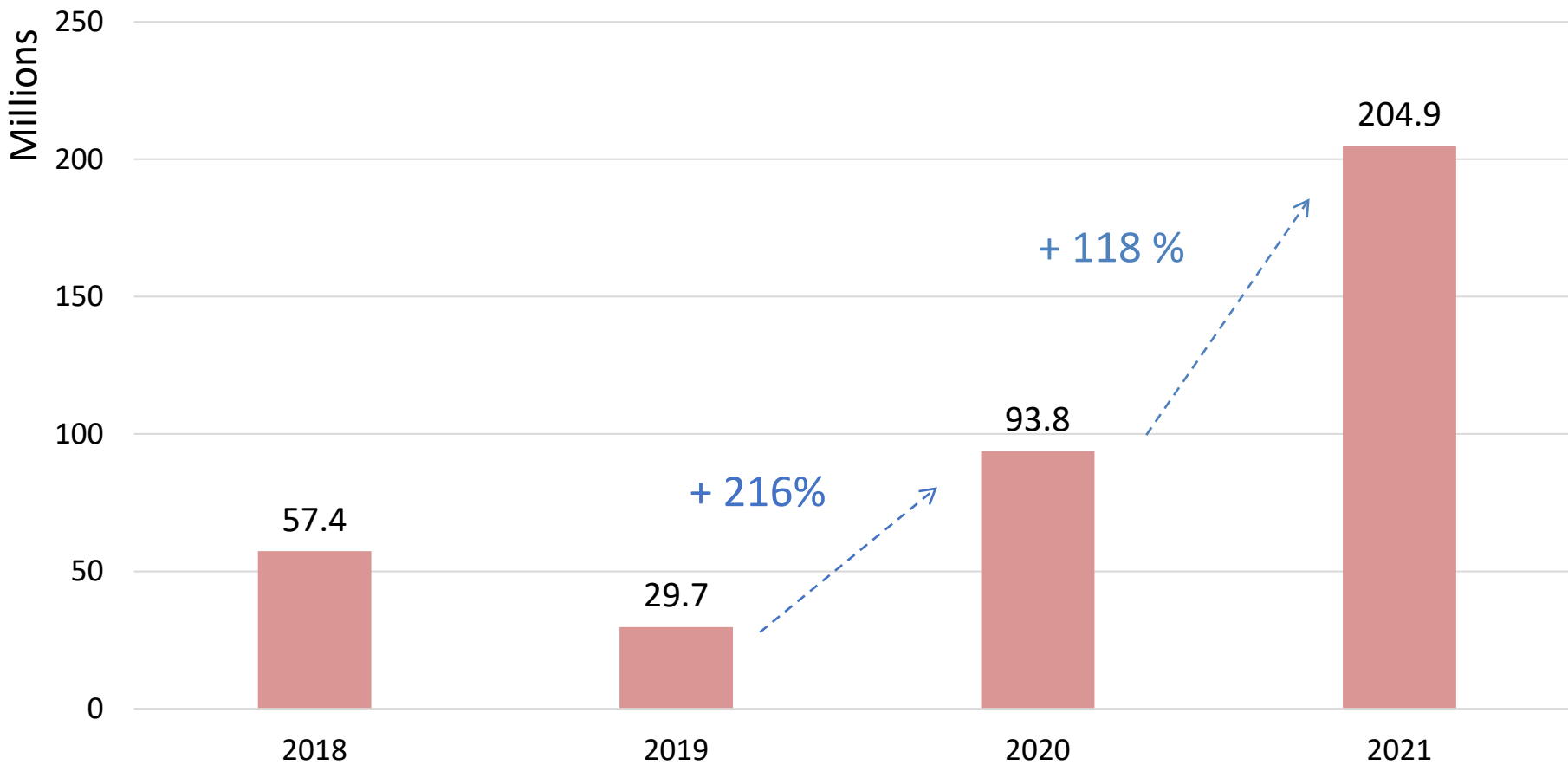


*2022 data reflects preceding 12 months as of April 15, 2022

Number of New Certificate of Waiver Laboratories: 2018-2022

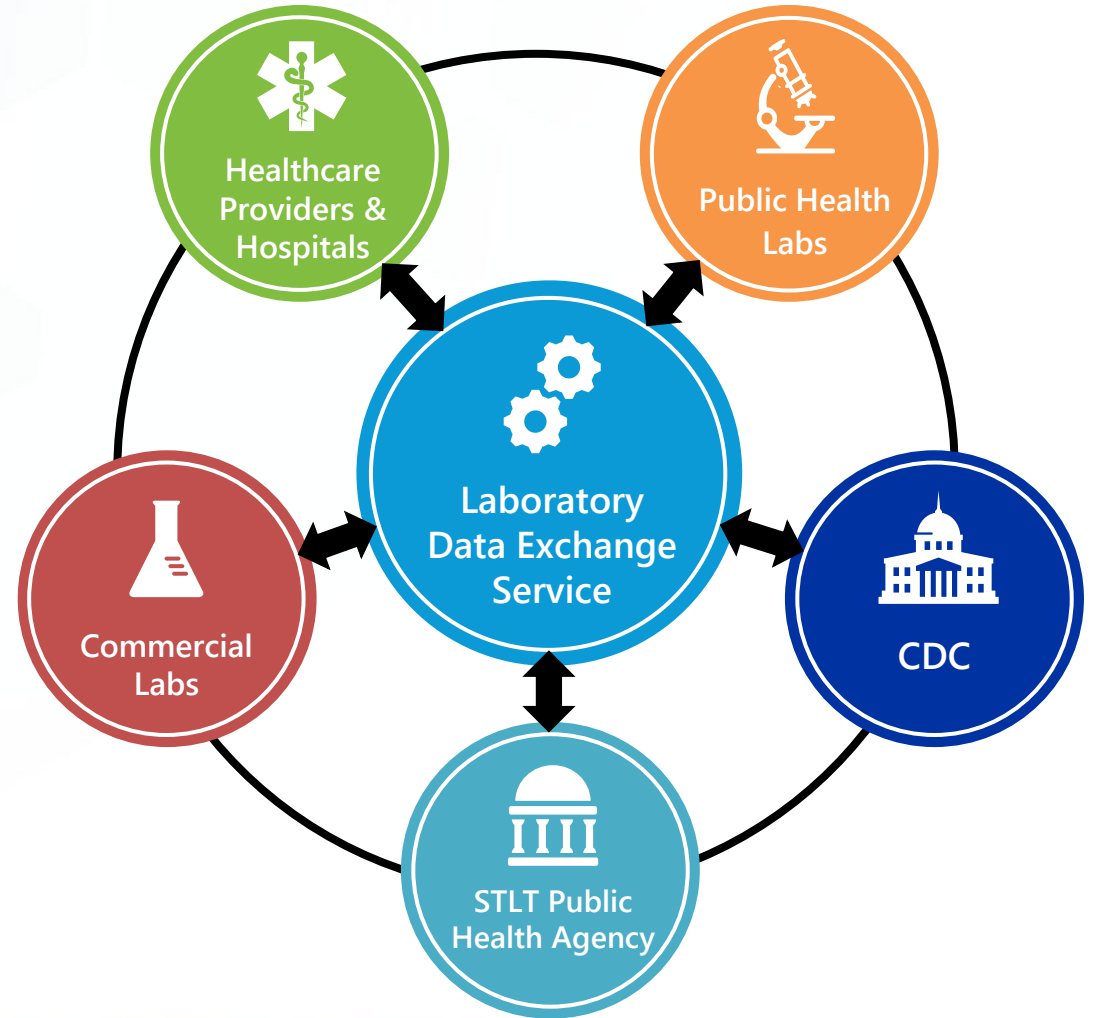


Testing Volume from New Waiver Laboratories: 2018-2022



Need to Improve Laboratory Data Exchange

- CDC's Data Modernization Initiative
- Working towards a national system for Electronic Test Orders and Results (ETOR)



Need to Strengthen the Public Health Laboratory Workforce

- **Reinvigorating** a national public health laboratory fellowship program
- **Launching** a new undergraduate public health laboratory internship program



Need to Advance Health Equity

- **Establish** ETOR systems between public health laboratories and healthcare providers that support people who are medically underserved
- **Reduce** the incidence of diagnostic errors associated for serious conditions most likely to be misdiagnosed among ethnic, racial, or other disproportionately affected groups
- **Increase** diversity in the laboratory workforce by recruiting more fellows and interns from under-represented groups and communities



Clinical Laboratory Partnerships

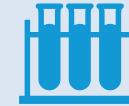


Need to Train the Expanding Laboratory Workforce

Clinical and Commercial
Laboratories



Public Health
Laboratories



Professional
Organizations



 **OneLab** NETWORK

A Unified Response to Training Needs

Academic
Institutions



Manufacturers





Bridge, train, and sustain a capacity-building community among public health and clinical laboratory professionals.

BRIDGE

Strengthen essential links between public health and clinical laboratories and CDC

TRAIN

Develop and evaluate resources with 3 goals: Be ready, respond, lead others on laboratory systems topics

SUSTAIN

Embed feasible, long-term capacity-building strategies within laboratory communities

OneLab Initiative Expanded





Thank you!

cdc.gov/csels/dls

cdc.gov/onelab





For more information, contact CDC
1-800-CDC-INFO (232-4636)
TTY: 1-888-232-6348 www.cdc.gov

Images used in accordance with fair use terms under the federal copyright law, not for distribution.

Use of trade names is for identification only and does not imply endorsement by U.S. Centers for Disease Control and Prevention.

The findings and conclusions in this report are those of the authors and do not necessarily represent the official position of Centers for Disease Control and Prevention.